

英特飞做出了零任务承诺，即在2020年之前，彻底消除对环境造成的任何负面影响，为了兑现这个承诺，我们一直都在思索每一个创意、生产和建筑决策对环境的影响。

As part of Interface's Mission Zero promise to eliminate any negative impact on the environment by 2020, we always consider the environment impact of every creative, manufacturing and building decision.

[www.interface.com.cn](http://www.interface.com.cn)

**上海工作室 / Shanghai Studio**

英特飞中国 / Interface China  
tel: 86-21-6340 3868  
[www.interface.com.cn](http://www.interface.com.cn)

**香港工作室 / Hongkong Studio**

英特飞中国 / Interface China  
tel: 852-2802 0838  
[www.interface.com.cn](http://www.interface.com.cn)

**北京工作室 / Beijing Studio**

英特飞中国 / Interface China  
tel: 86-10-6590 7812  
[www.interface.com.cn](http://www.interface.com.cn)

**太仓生产基地 / Taicang Plant**

英特飞中国 / Interface China  
tel: 86-512- 5373 9888  
[www.interface.com.cn](http://www.interface.com.cn)

**广州工作室 / Guangzhou Studio**

英特飞中国 / Interface China  
tel: 86-20-3869 2887  
[www.interface.com.cn](http://www.interface.com.cn)

**东南亚 / South East Asia**

英特飞亚洲 / Interface Asia  
tel: 65-6478 1510  
[www.interface.com](http://www.interface.com)

**韩国 / South Korea**

tel: 82-2-555 1734  
[www.interface.com](http://www.interface.com)

**日本 / Japan**

英特飞日本 / Interface Japan  
tel: 81-3-5733 5211  
[www.interface.com](http://www.interface.com)

**澳大利亚 / Australia**

英特飞澳大利亚 / Interface Australia  
local toll free: 1800 008 101  
[www.interface.com.au](http://www.interface.com.au)

04/2018  
SF0097T0

(IFSCN-201804)



**Mission Zero:**  
our promise to eliminate any  
negative impact our company  
may have on the environment  
by the year 2020.

# Aerial Squares AE310, AE312

Interface®

## Aerial™ Squares

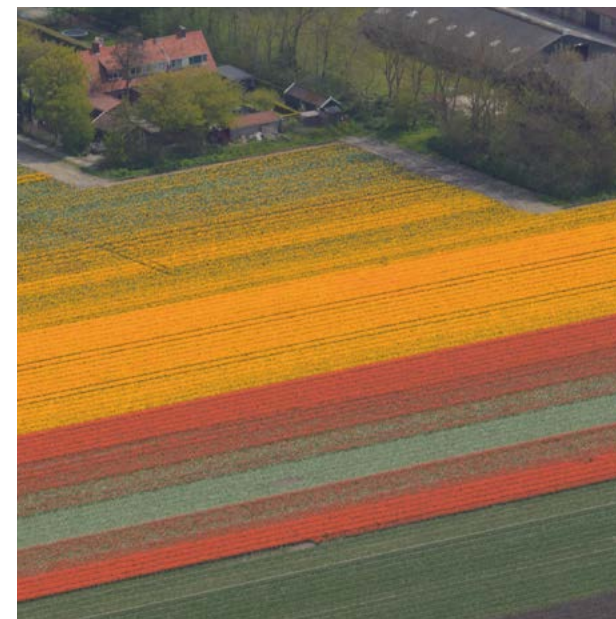
---

自上而下的角度给我们提供了一个独一无二的机会，来见证各种元素混合在一起连接性，这种有如网织般的连接关系既让我们着迷又令我们安心。Aerial系列产品的每一种配色都采用几种色调混合而成，从而使简单的中性调色板能够幻化出各种新的图案。色调变化从一块地毯到另一块，看似无穷无尽，既刺激又引人注目。

AE310的结构让人想起手工织品的经纬线。AE312加入了几缕彩线，使纹理骤然一亮。Aerial方形地毯系列可与其他系列组合在一起，从而创造出各种设计可能性，有待我们去探索挖掘。

A view from above gives us the unique opportunity to witness connectivity. The web of connections fascinates and assures us. In Aerial, a simple neutral palette travels new paths when several hues are tangled together for each colourway. The way the shades shift in seemingly endless movements from one tile to the next is provocative and stirs attention.

The construction of AE310 recalls the warp and weft of a hand-woven textile. AE312 adds strands of colour to light up that texture. The Aerial squares fit together effortlessly with the rest of the collection, creating a network of design possibilities to trace and discover.

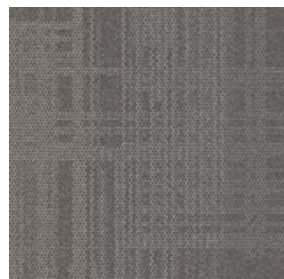




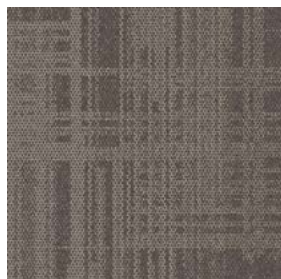


产品 / Product AE310 颜色 / Colours Mist, Greige, Ink 安装 / Installed 无方向 / Non Directional  
产品 / Product AE312 颜色 / Colour Ink/Accent 安装 / Installed 直角转角 / Quarter Turn

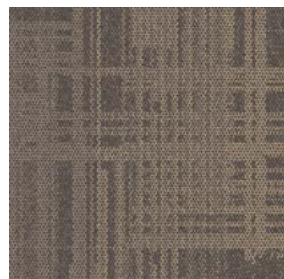
AE310 色系 / Colourline



7921-001-000 Mist



7921-002-000 Fog



7921-003-000 Taupe



7921-004-000 Chestnut



7921-005-000 Greige



7921-006-000 Iron



7921-007-000 Smoke



7921-008-000 Ink



AE312 色系 / Colourline



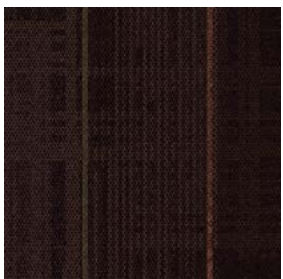
8148-001-000 Mist/Accent



8148-002-000 Fog/Accent



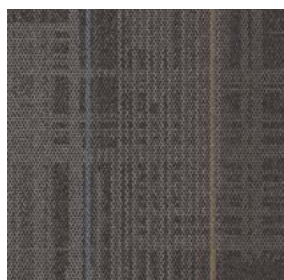
8148-003-000 Taupe/Accent



8148-004-000 Chestnut/Accent



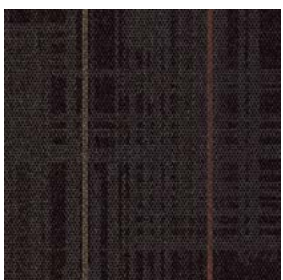
8148-005-000 Greige/Accent



8148-006-000 Iron/Accent



8148-007-000 Smoke/Accent

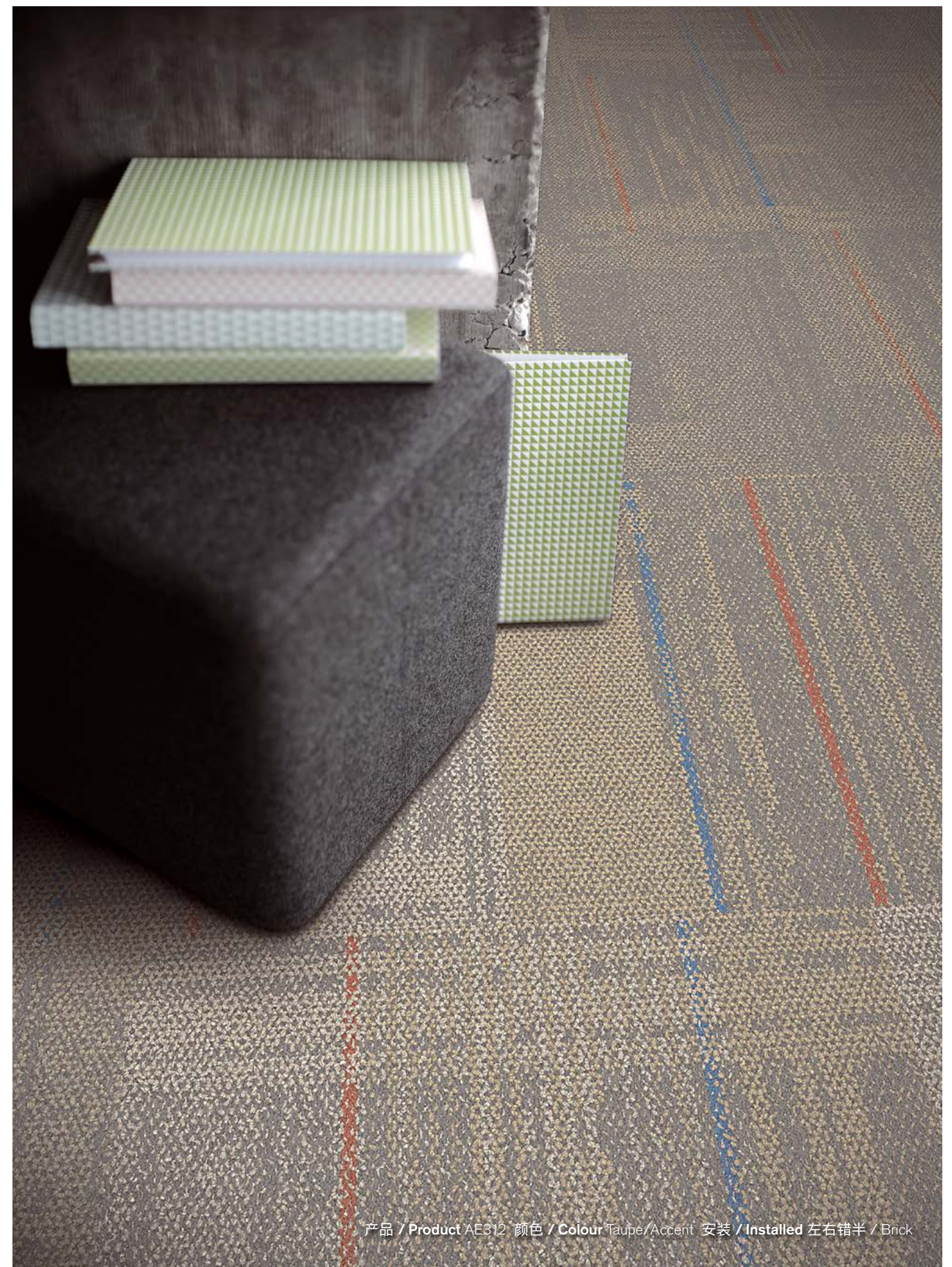


8148-008-000 Ink/Accent





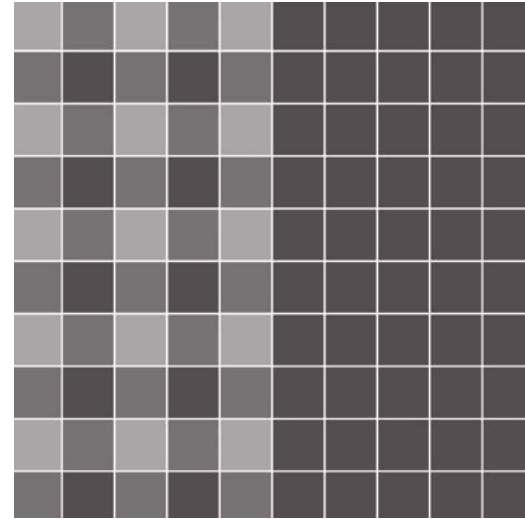
产品 / Product AE312 颜色 / Colour Iron/Accent 安装 / Installed 左右错半 / Brick  
产品 / Product AE310 颜色 / Colour Iron 安装 / Installed 无方向 / Non Directional



产品 / Product AE312 颜色 / Colour Taupe/Accent 安装 / Installed 左右错半 / Brick

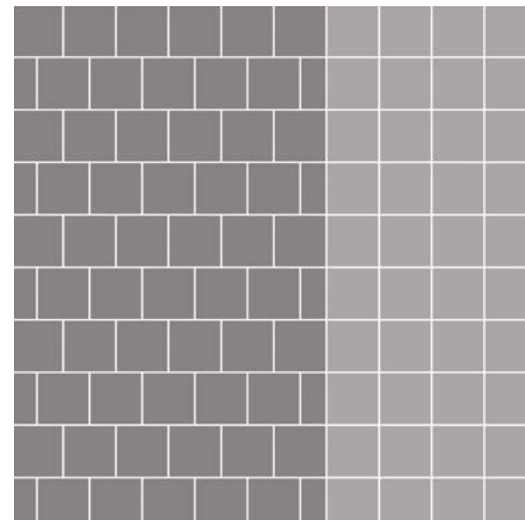
## 设计理念 / Design Ideas

下文展示如何通过地板布局实现本宣传册图片中的设计理念 / Below are floor layouts showing how to create the design ideas shared in several of the images featured in this brochure.



产品 / Product AE310 颜色 / Colours Mist, Greige, Ink 安装 / Installed 无方向 / Non Directional

产品 / Product AE312 颜色 / Colour Ink/Accent 安装 / Installed 直角转角 / Quarter Turn



产品 / Product AE312 颜色 / Colour Ink/Accent 安装 / Installed 左右错半 / Brick

产品 / Product AE310 颜色 / Colour Ink 安装 / Installed 无方向 / Non Directional

## 技术参数 / Specifications

### AE310™ **i2**

产品型号  
产品定义  
纱线/纤维  
染色方式  
簇绒机器规格  
毯毛厚度  
总厚度  
地毯尺寸  
建议使用区域  
抑菌类型  
抗污类型  
回收成分

7921 图案号 000  
高低圈绒  
BCF尼龙6 – 100%环保尼龙  
100% 原液染色  
1/12  
2.5毫米 +/- 0.5毫米  
6.0毫米 +/- 0.5毫米  
50厘米 x 50厘米  
人流密集区域  
Intersept®  
Protekt 2®  
GlasBac® 65%-70%回收成分  
GlasBac® RE 80%-85%回收成分  
无方向

Style Code  
Product Definition  
Yarn/Fibre  
Colour System  
Machine Gauge  
Pile Thickness  
Total Thickness  
Tile Size  
Area of Use  
Lifetime Antimicrobial  
Soil/Stain Protection  
Total Recycled Content

7921 Pattern 000  
Tufted Textured Loop  
BCF Nylon Type 6 – 100% Recycled Content  
100% Solution Dyed  
1/12  
2.5mm +/- 0.5mm  
6.0mm +/- 0.5mm  
50cm x 50cm  
Commercial – Heavy Use  
Intersept®  
Protekt 2®  
GlasBac® 65% to 70% Total Recycled Content  
Glasbac® RE 80% to 85% Total Recycled Content  
Non Directional

建议安装方式



无方向

Installation Methods



Non Directional

### AE312™ **i2**

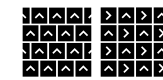
产品型号  
产品定义  
纱线/纤维  
染色方式  
簇绒机器规格  
毯毛厚度  
总厚度  
地毯尺寸  
建议使用区域  
抑菌类型  
抗污类型  
回收成分

8148 图案号 000  
高低圈绒  
BCF尼龙6 – 100%环保尼龙  
100% 原液染色  
1/12  
2.5毫米 +/- 0.5毫米  
6.0毫米 +/- 0.5毫米  
50厘米 x 50厘米  
人流密集区域  
Intersept®  
Protekt 2®  
GlasBac® 65%-70%回收成分  
GlasBac® RE 80%-85%回收成分  
左右错半, 直角转角

Style Code  
Product Definition  
Yarn/Fibre  
Colour System  
Machine Gauge  
Pile Thickness  
Total Thickness  
Tile Size  
Area of Use  
Lifetime Antimicrobial  
Soil/Stain Protection  
Total Recycled Content

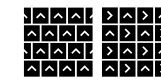
8148 Pattern 000  
Tufted Textured Loop  
BCF Nylon Type 6 – 100% Recycled Content  
100% Solution Dyed  
1/12  
2.5mm +/- 0.5mm  
6.0mm +/- 0.5mm  
50cm x 50cm  
Commercial – Heavy Use  
Intersept®  
Protekt 2®  
GlasBac® 65% to 70% Total Recycled Content  
Glasbac® RE 80% to 85% Total Recycled Content  
Brick, Quarter-turn

建议安装方式



左右错半 直角转角

Installation Methods



Brick Quarter-turn



Production specifications are subject to normal manufacturing tolerances and may be changed without notice. Slight variation in colour among different production lots are normal and should be considered in the overall installation plan. Products covered by manufacturer's written warranty only. All other warranties, including without limitation any implied warranties of merchantability or fitness for particular purpose, are hereby disclaimed. Contact your representative for written warranty information. Recycled content calculations are based on historical averages by total weight of the product for backings. Yarn/Fibre recycled content calculation excludes backing. We update our recycled content information and other environmental data regularly to reflect changes and advancements in our technology.

产品规格存在正常的制造偏差, 偏差变动不另行标注。不同生产批次之间若有轻微色差, 属正常现象, 应在总体安装规划时予以考虑。制造商出具的书面产品质保书为唯一凭证。其它担保, 包括但不限于任何有关销售或特定用途的担保, 均不予认可。请联系相关销售代表, 获取书面质保书。回收材料含量的计算是基于用于产品底背总重量的历次平均值, 纱线/纤维的回收含量计算不包括在底背回收中。公司定期更新回收成分和其他环境数据, 以展示英特飞的技术变革与进步。